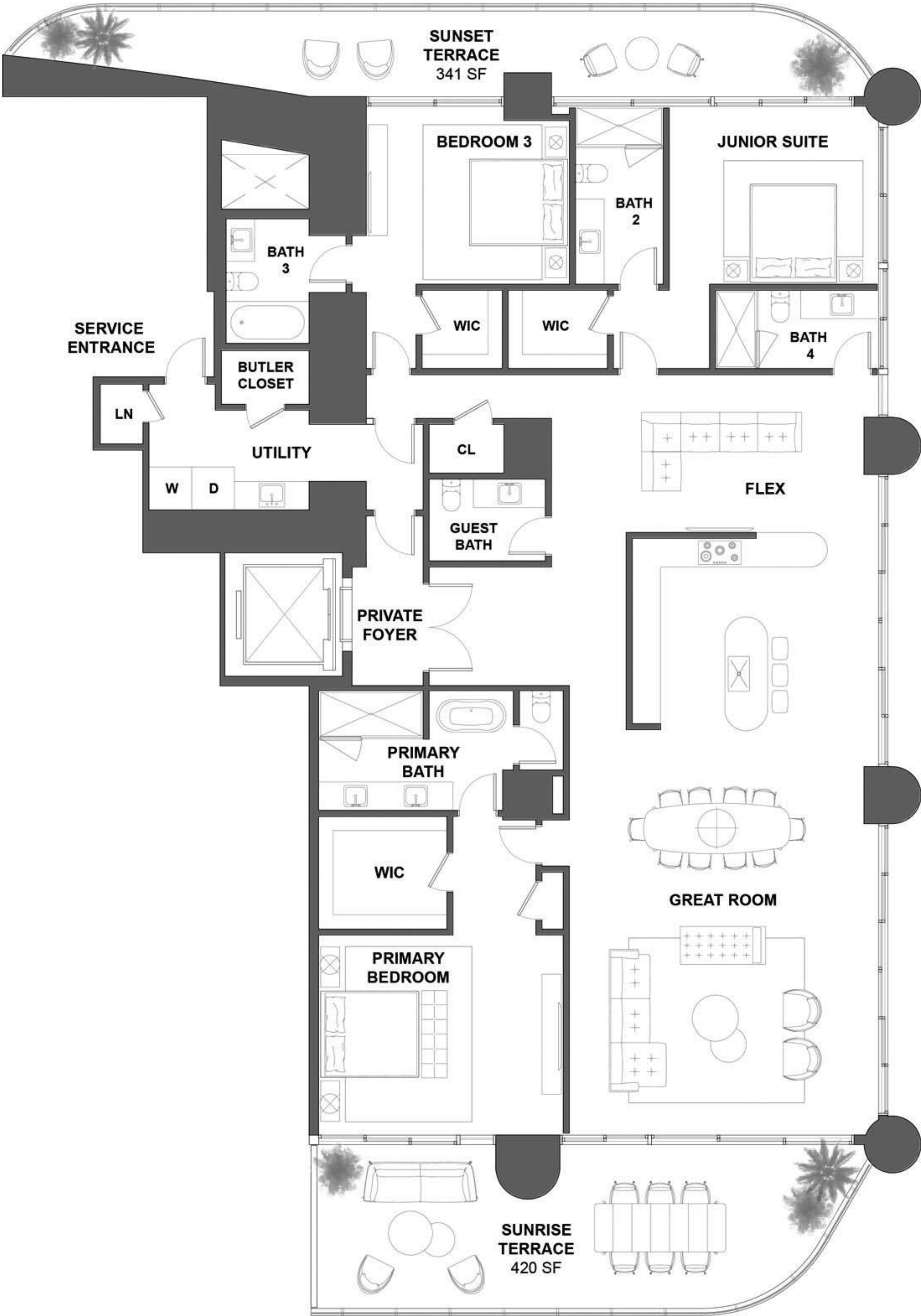


Residence 01


Levels 12 to 15 / South Tower

Approximate dimensions

- 3 BEDROOMS + FLEX
- 4.5 BATHROOMS
- 3,238 SF / 300.8 SM INTERIOR
- 761 SF / 70.7 SM EXTERIOR
- 3,999 SF / 371.5 SM TOTAL



Atlantic Ocean

 The St. Regis Residences, Sunny Isles Beach are not owned, developed or sold by Marriott International, Inc. or its affiliates ("MI"). La Playa Beach Associates, LLC uses the St. Regis marks under a license from MI, which has not confirmed the accuracy of any of the statements or representations made herein. This project is being developed by La Playa Beach Associates, LLC, which has the right to use the trademark names and logos of Fortune International Group and Chateau Group.

ORAL REPRESENTATIONS CANNOT BE RELIED UPON AS CORRECTLY STATING THE REPRESENTATIONS OF THE DEVELOPER. FOR CORRECT REPRESENTATIONS, MAKE REFERENCE TO THIS BROCHURE AND TO THE DOCUMENTS REQUIRED BY SECTION 718.503, FLORIDA STATUTES, TO BE FURNISHED BY A DEVELOPER TO A BUYER OR LESSEE.

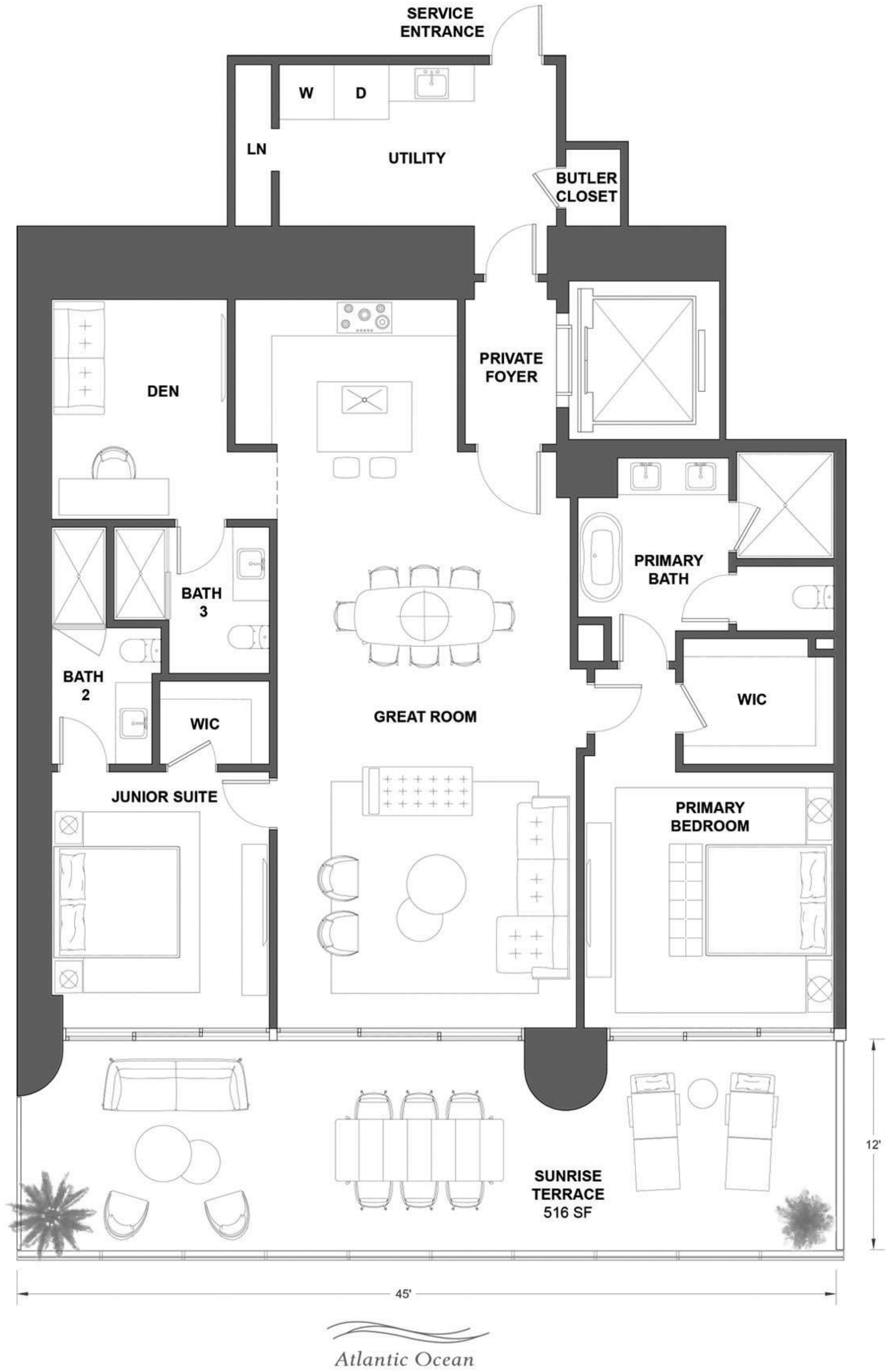
This is not intended to be an offer to sell, or solicitation to buy, condominium units to residents of any jurisdiction where prohibited by law, and your eligibility for purchase will depend upon your state of residency. Stated dimensions are measured to the exterior boundaries of the exterior walls and the centerline of interior demising walls and in fact vary from the dimensions that would be determined by using the description and definition of the "Unit" set forth in the Declaration (which generally only includes the interior airspace between the perimeter walls and excludes interior structural components). For your reference, the area of the Unit, determined in accordance with those defined unit boundaries, is set forth on Exhibit "3" to the Declaration. Note that measurements of rooms set forth on this floor plan are generally taken at the greatest points of each given room (as if the room were a perfect rectangle), without regard for any cutouts. Accordingly, the area of the actual room will typically be smaller than the product obtained by multiplying the stated length times width. All dimensions are approximate and may vary with actual construction, and all floor plans and development plans are subject to change. Furniture is not included with the sale of the Units.

Residence 02

Levels 12 to 15 / South Tower

Approximate dimensions

- 2 BEDROOMS + DEN
- 3 BATHROOMS
- 2,045 SF / 190 SM INTERIOR
- 516 SF / 47.9 SM EXTERIOR
- 2,561 SF / 237.9 SM TOTAL

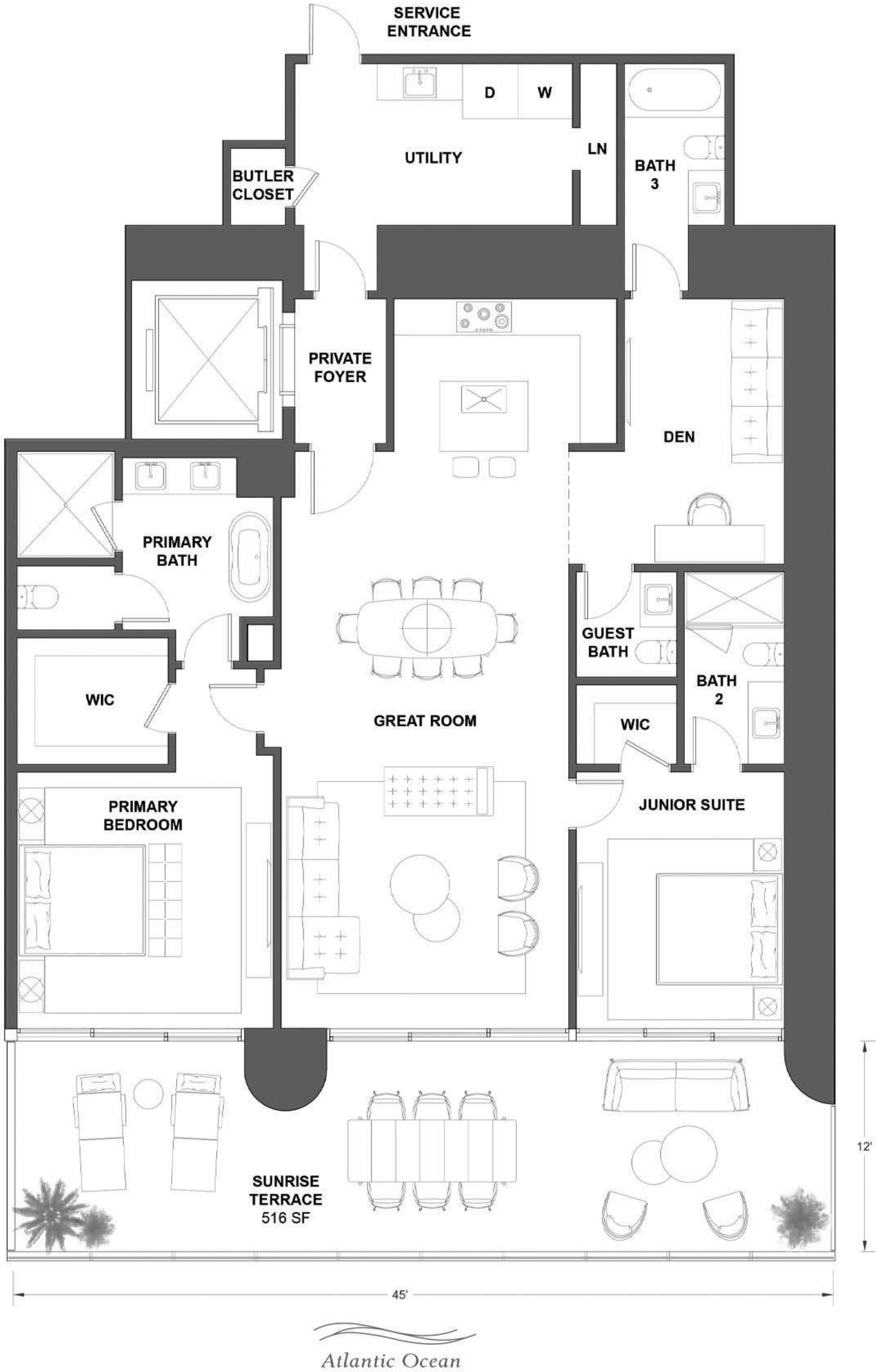


Residence 03

Levels 12 to 15 / South Tower

Approximate dimensions

- 2 BEDROOMS + DEN
- 3.5 BATHROOMS
- 2,109 SF / 196 SM INTERIOR
- 516 SF / 47.9 SM EXTERIOR
- 2,625 SF / 243.9 SM TOTAL

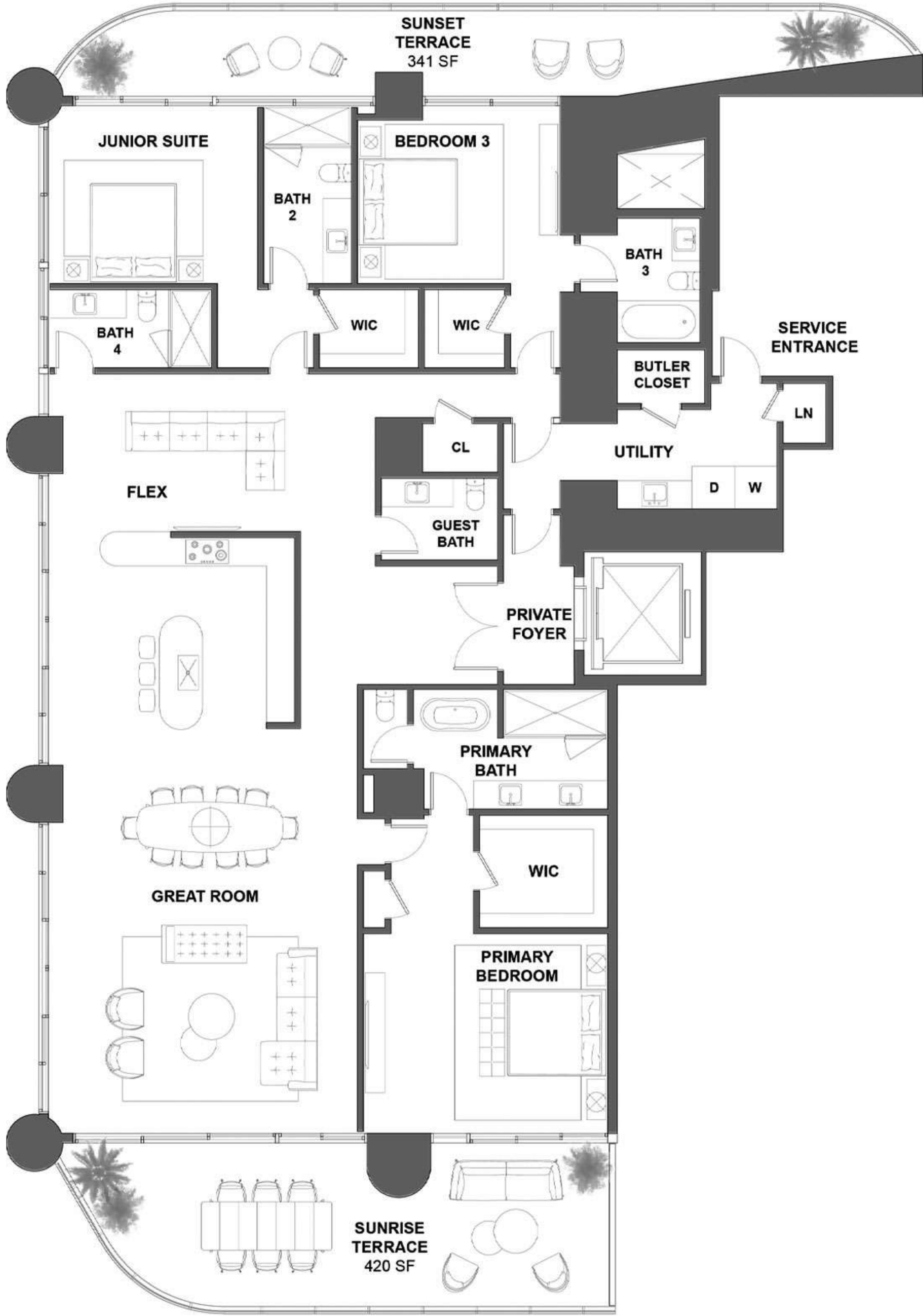


Residence 04

Levels 12 to 15 / South Tower

Approximate dimensions

- 3 BEDROOMS + FLEX
- 4.5 BATHROOMS
- 3,238 SF / 300.8 SM INTERIOR
- 761 SF / 70.7 SM EXTERIOR
- 3,999 SF / 371.5 SM TOTAL



Atlantic Ocean

Residence 01

Levels 18 to 33 / South Tower

Approximate dimensions

- 3 BEDROOMS + FLEX
- 4.5 BATHROOMS
- 3,053 SF / 283.6 SM INTERIOR
- 641 SF / 59.6 SM EXTERIOR
- 3,694 SF / 343.2 SM TOTAL

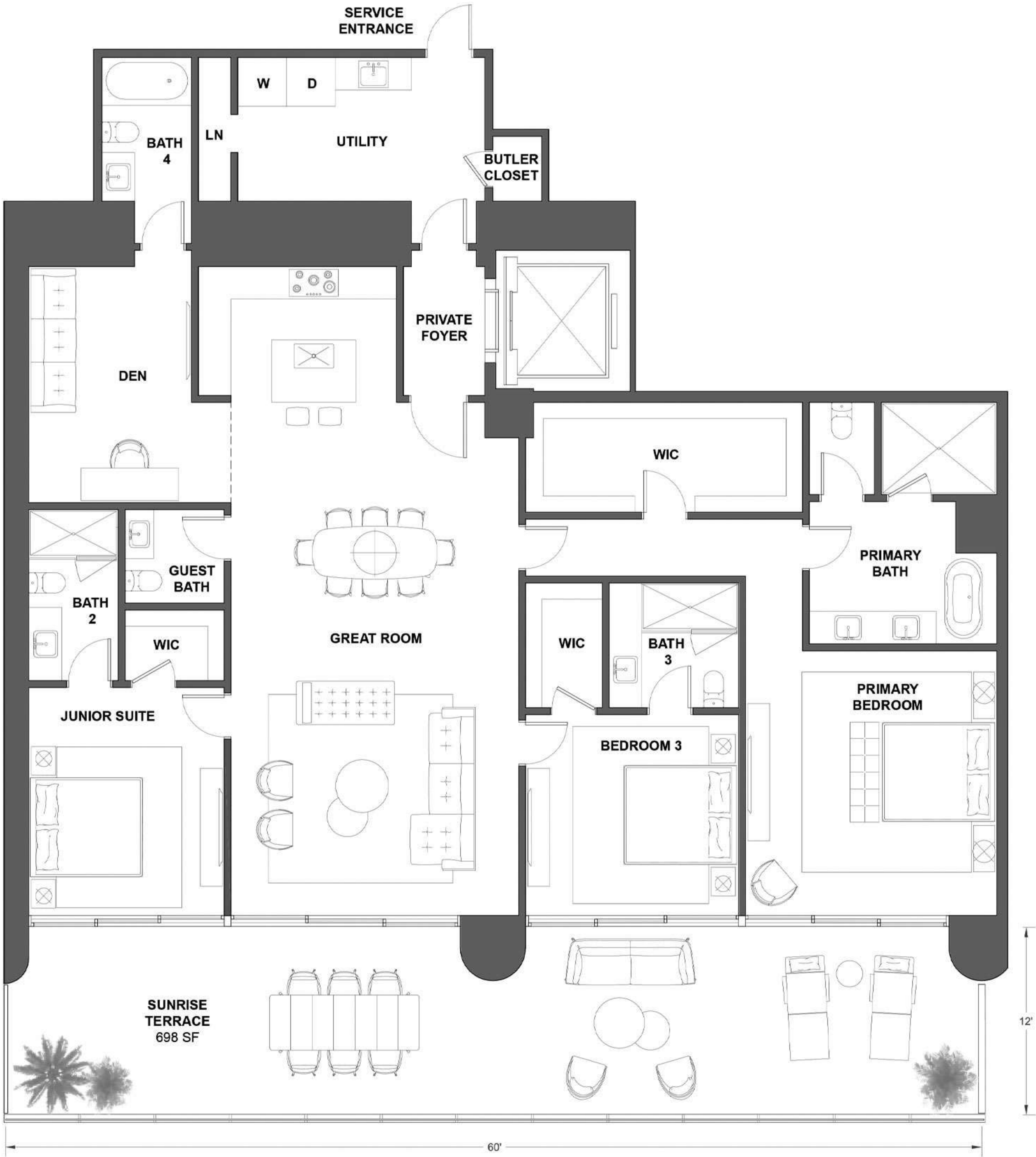


Residence 02

Levels 18 to 33 / South Tower

Approximate dimensions

- 3 BEDROOMS + DEN
- 4.5 BATHROOMS
- 2,636 SF / 244.9 SM INTERIOR
- 698 SF / 64.8 SM EXTERIOR
- 3,334 SF / 309.7 SM TOTAL



Atlantic Ocean

Residence 03

Levels 18 to 33 / South Tower

Approximate dimensions

2 BEDROOMS + DEN

3.5 BATHROOMS

2,105 SF / 195.6 SM INTERIOR

520 SF / 48.3 SM EXTERIOR

2,625 SF / 243.9 SM TOTAL

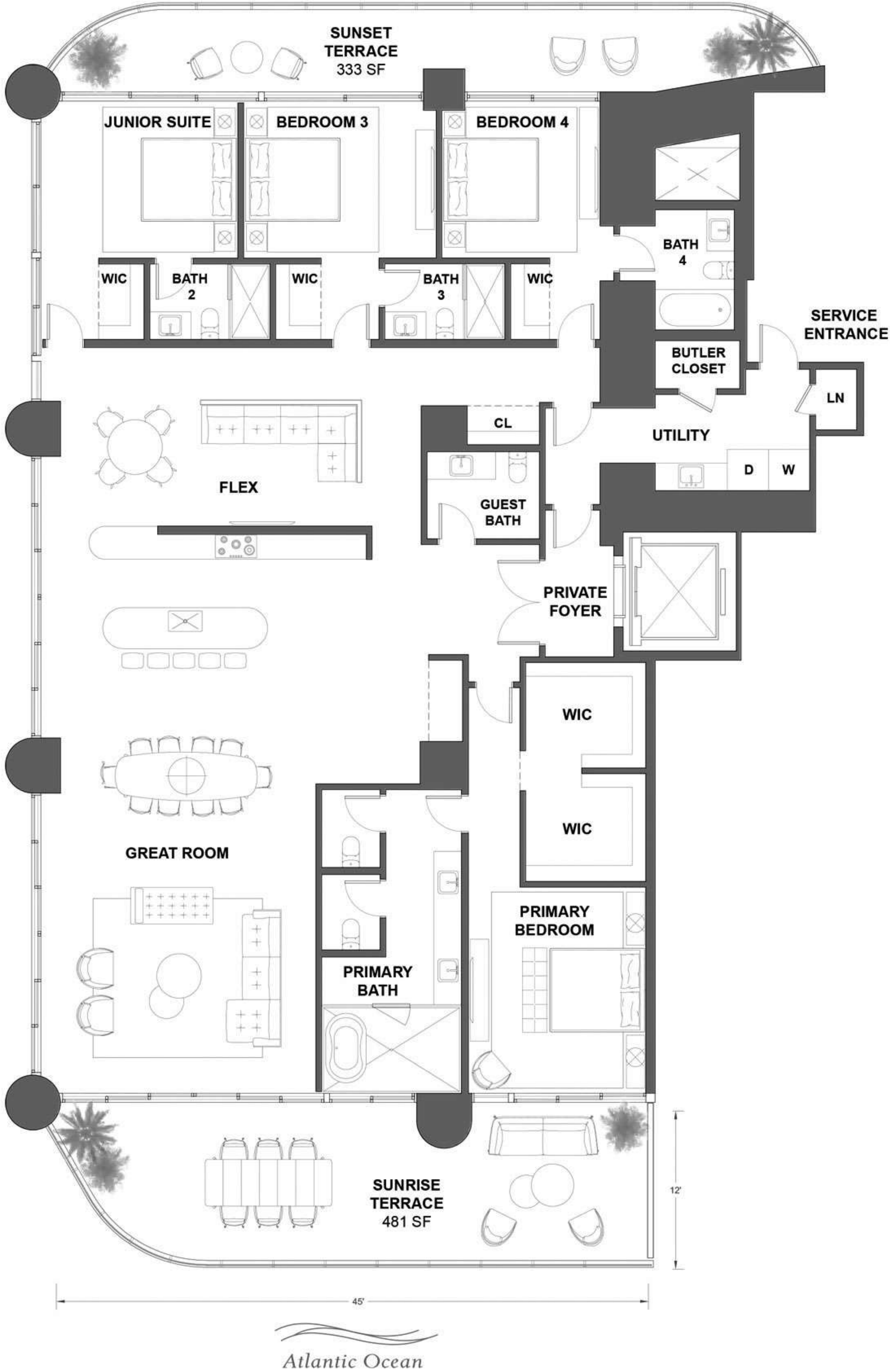


Residence 04

Levels 18 to 33 / South Tower

Approximate dimensions

- 4 BEDROOMS + FLEX
- 4.5 BATHROOMS
- 3,588 SF / 333.3 SM INTERIOR
- 814 SF / 75.6 SM EXTERIOR
- 4,402 SF / 408.9 SM TOTAL

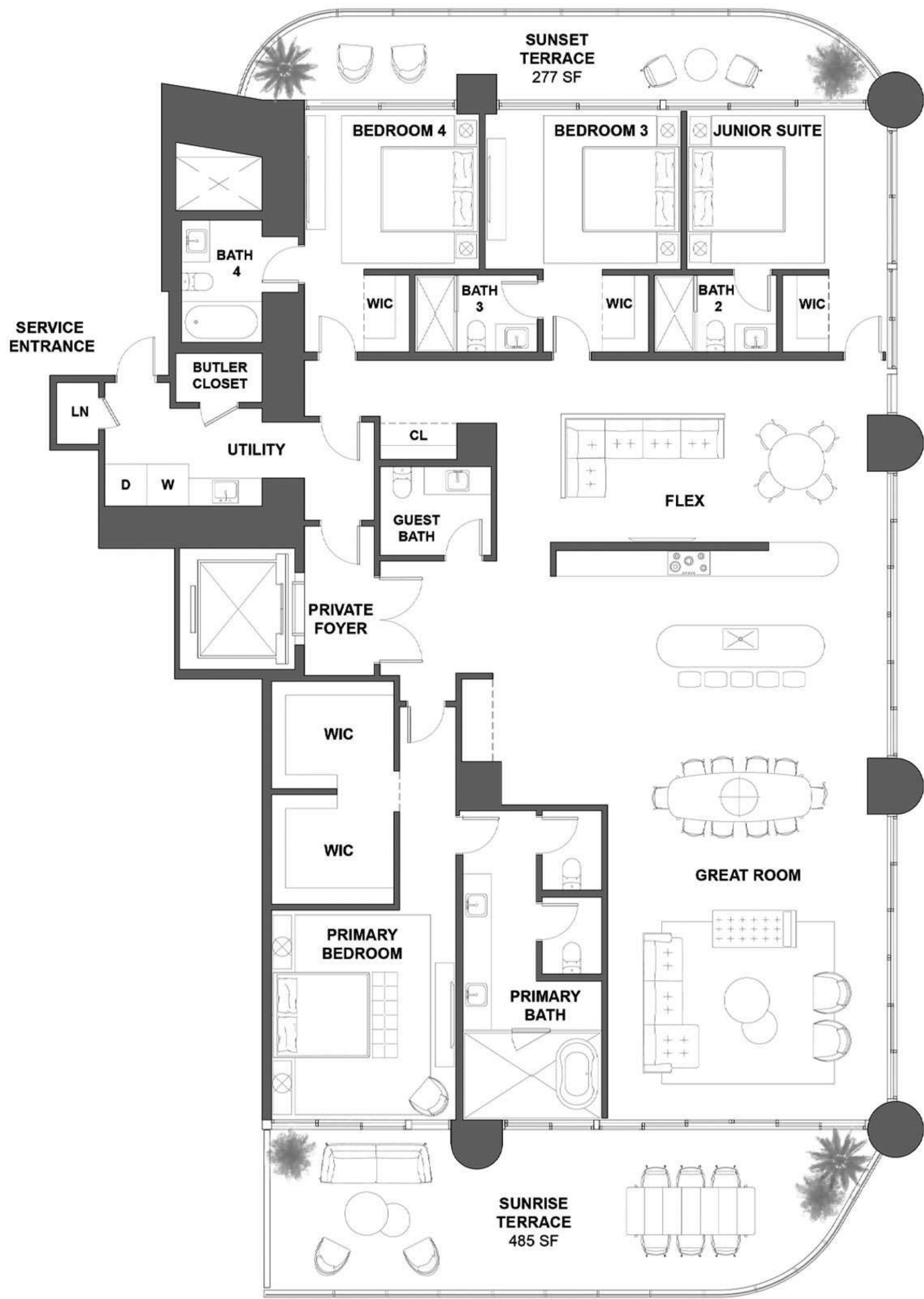


Residence 01

Levels 35 to 43 / South Tower

Approximate dimensions

- 4 BEDROOMS + FLEX
- 4.5 BATHROOMS
- 3,583 SF / 332.9 SM INTERIOR
- 762 SF / 70.8 SM EXTERIOR
- 4,345 SF / 403.7 SM TOTAL



Atlantic Ocean

Residence 02

Levels 35 to 43 / South Tower

Approximate dimensions

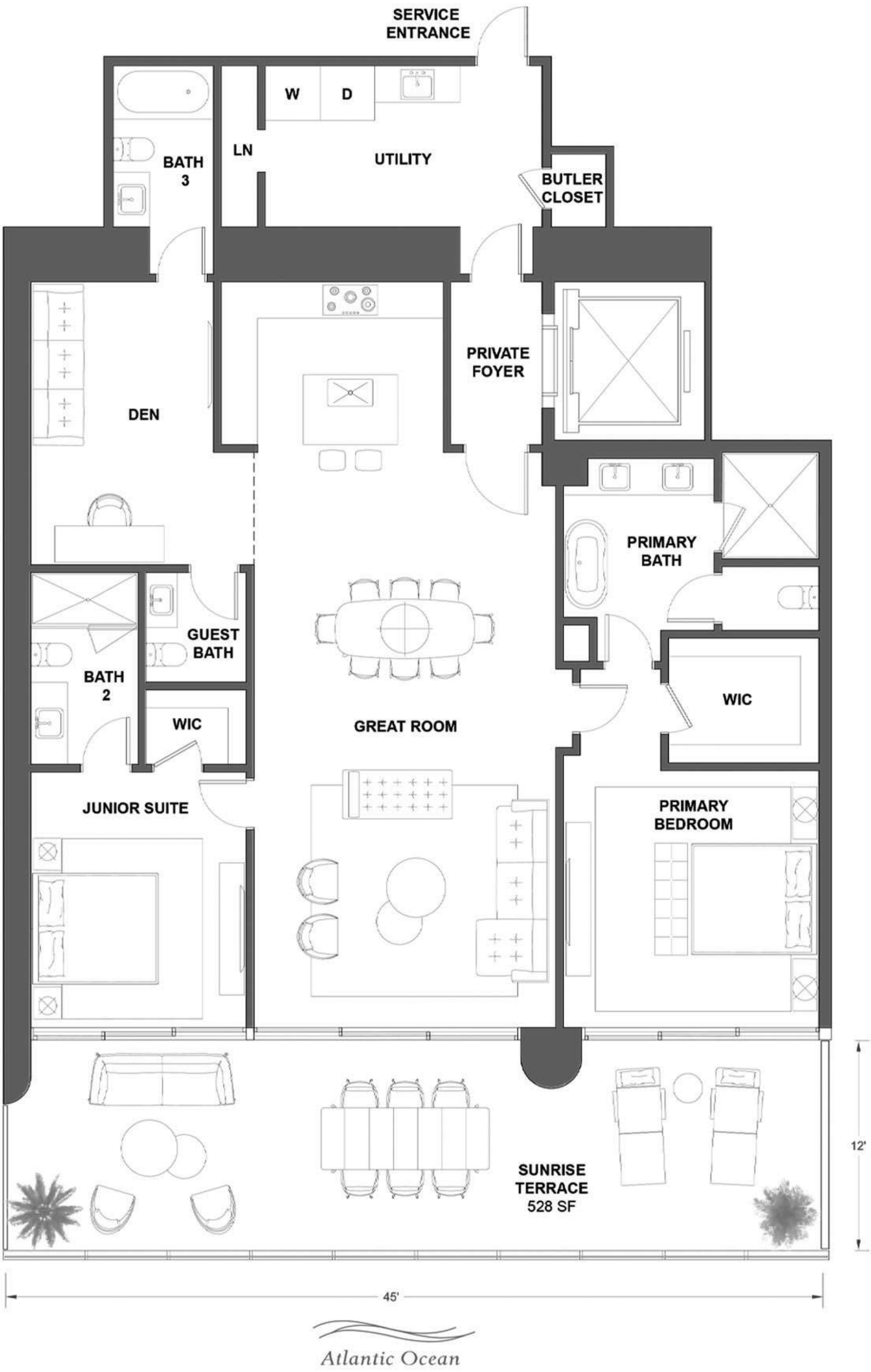
2 BEDROOMS + DEN

3.5 BATHROOMS

2,098 SF / 194.9 SM INTERIOR

528 SF / 49.1 SM EXTERIOR

2,626 SF / 244 SM TOTAL



Residence 03

Levels 35 to 43 / South Tower

Approximate dimensions

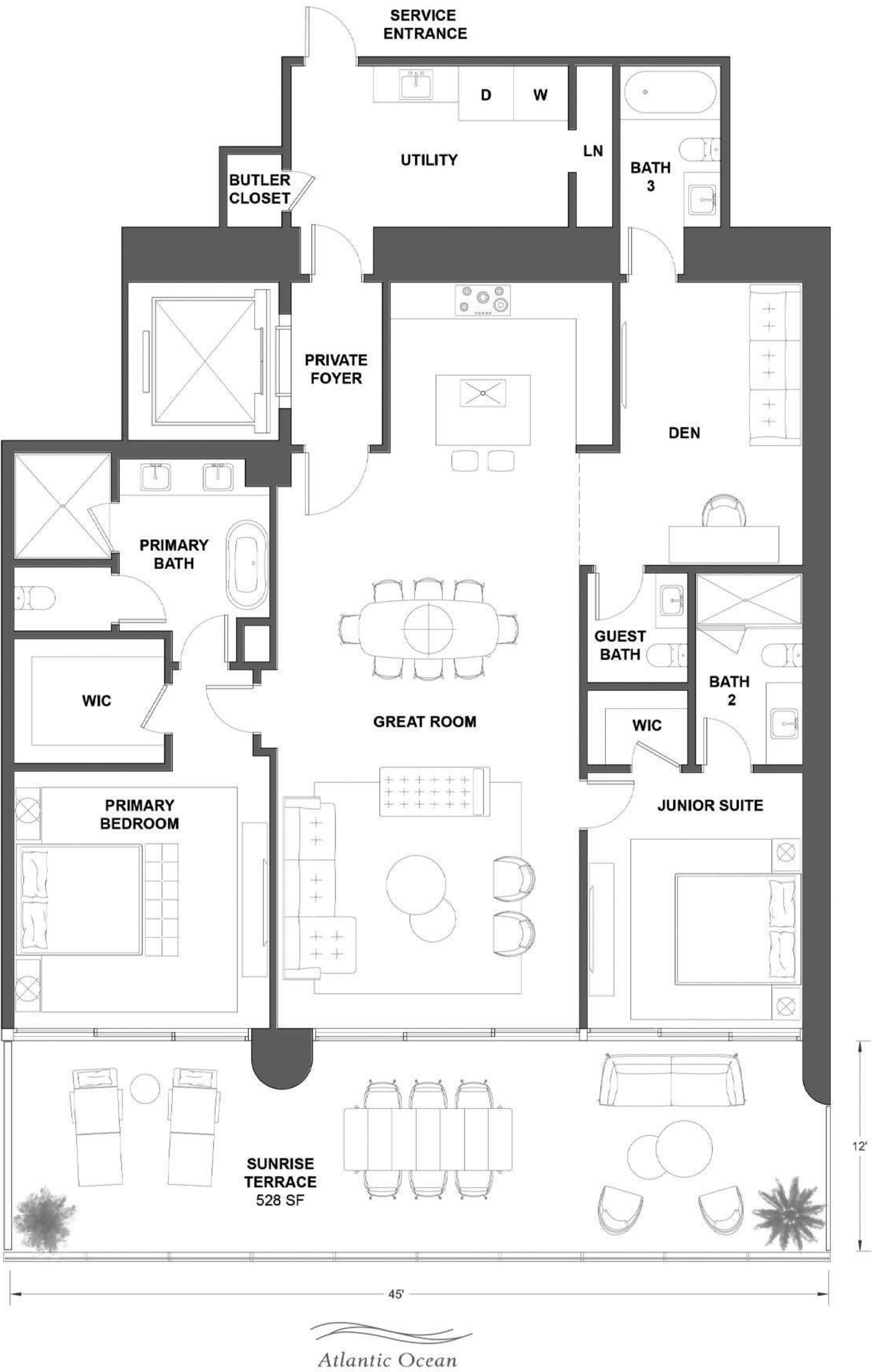
2 BEDROOMS + DEN

3.5 BATHROOMS

2,098 SF / 194.9 SM INTERIOR

528 SF / 49.1 SM EXTERIOR

2,626 SF / 244 SM TOTAL



Residence 04

Levels 35 to 43 / South Tower

Approximate dimensions

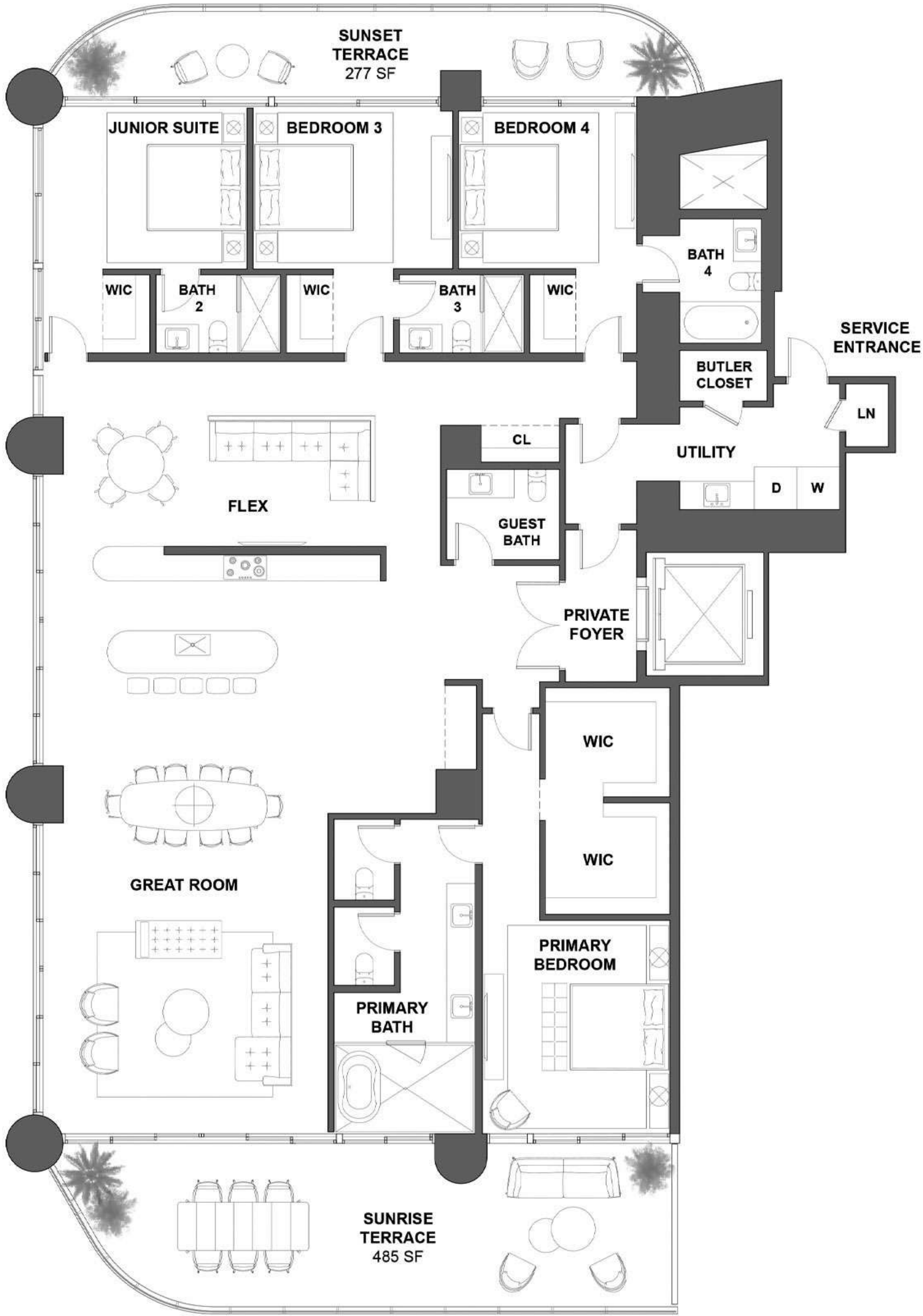
4 BEDROOMS + FLEX

4.5 BATHROOMS

3,583 SF / 332.9 SM INTERIOR

762 SF / 70.8 SM EXTERIOR

4,345 SF / 403.7 SM TOTAL



Residence 01

Levels 45 to 49 / South Tower

Approximate dimensions

4 BEDROOMS + FLEX

4.5 BATHROOMS

4,105 SF / 381.4 SM INTERIOR

960 SF / 89.2 SM EXTERIOR

5,065 SF / 470.6 SM TOTAL



Atlantic Ocean

Residence 02

Levels 45 to 49 / South Tower

Approximate dimensions

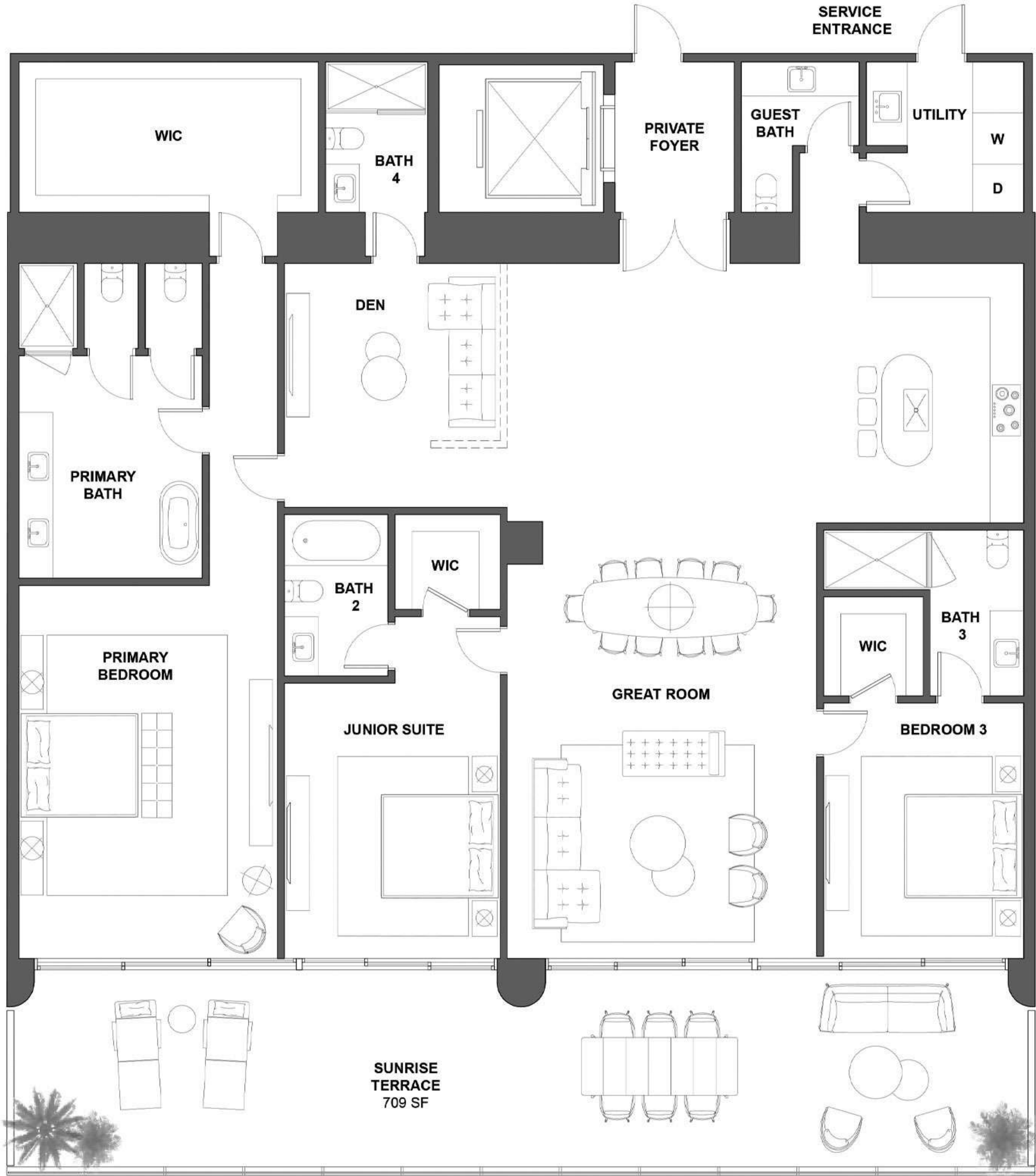
3 BEDROOMS + DEN

4.5 BATHROOMS

3,134 SF / 291.1 SM INTERIOR

709 SF / 65.9 SM EXTERIOR

3,843 SF / 357 SM TOTAL



Atlantic Ocean

Residence 03

Levels 45 to 49 / South Tower

Approximate dimensions

- 4 BEDROOMS + FLEX
- 4.5 BATHROOMS
- 4,105 SF / 381.4 SM INTERIOR
- 960 SF / 89.2 SM EXTERIOR
- 5,065 SF / 470.6 SM TOTAL

